

PROJECT Madison High School Stadium Renovations
FIELD REPORT

PROJECT Madison High School Stadium Renovations
PROJECT NO 0201-199620
CONTRACT
FIELD REPORT NO 0011
DATE 11-15-2023
TIME Onsite ~3:00 - In Meeting 3:15pm
WEATHER Partly Cloudy
TEMP RANGE 58° while onsite – 45° low/58° high
PRESENT AT SITE Dr. Will Hoffman, Lisa Gahagan, Phillip Cannady, Michael Jackson, Ian Johnson, Scott Donald, Rob Stenhouse, Jes Stafford
DISTRIBUTION Dr. Will Hoffman, Lisa Gahagan, Phillip Cannady, Michael Jackson, Ian Johnson, Scott Donald, Rob Stenhouse, Chris Otahal, Robyn Maynard, Ariel Regnier, Derek Butler, Daniel Hyatt, *all invitees*
REPORT BY Jes Stafford, NCARB, CDT

WORK IN PROGRESS:

- Press box framing, exterior: siding, trim, painting, masonry
- Slope stabilization
- Visitor's slab and walkway prep
- D-Zones demolition and prep
- Curing at pile cap at Bench C

WORK COMING UP:

- Upper Concourse Concrete
- Visitor's Sidewalks
- Aluminum Bleachers scheduled to ship December 1
- Backfill Bench C to continue after forms stripped from upper pile caps and footings.

OBSERVATIONS/DISCUSSION:

- Generally Reviewed CORs
- Generally Reviewed RFIs
- Generally Reviewed Submittals
- Fence changes and adjustments – also reviewed on jobsite.
 - Fence Pre-installation meeting pending to finalize location and confirm details.
 - Commercial option is recommended for added durability.
- Discussed access panel above press box into space above ceiling (~2'x2').
- Madison County Schools Board meeting is December 11
 - Phillip C coordinating prelim. paint package pricing prior for their consideration.

- Observed condition at home side existing aluminum ramp where sidewalk will be poured under – need detail for small retaining wall to support ramp landing above after undercutting.
- Discussed scoreboard and play clocks to make sure power/wiring will be patched and functional after old scoreboard removed.
 - Pricing pending from GC.
- Discussed relocating concrete Turf Monument and Plaque.
 - Mike J will coordinate and place on trailer for school.
- Discussed Door P104/Stone masonry conflict with door frame.
 - LS3P will review hardware to provide a mechanical stop to prevent door from opening into stone.
 - GC will coordinate chipping/removing the stone back out of door swing.
- Discussed concerns with heavy construction traffic on track paving.
 - Will be fine based on observations of how traffic has already been supported without signs of pumping or cracking.
- Reviewed Schedule

RFI's

- RFI-51 - Observed need for insulation in box beams at press box perimeter – recommend including added insulation to protect plumbing in cold months.
 - Response sent 11/6

SUBMITTALS

- Fence Submittal in H&M's court.
- TLT Accessories Submittal on the way – to be coordinated with the MCS Vendors

ADDITIONAL NOTES

- (8.5) rain days total to date with none claimed up to 11/14
- Further discussed extending General Conditions for the D-zone and Bus loop work, keep under same contract.

SAFETY

- One traffic conflict with wrestling event was discussed – coordination to avoid conflicts based on parking locations not in the road.

NEXT OAC MEETING

- Wednesday, 12/20/23, 3:15 pm

PHOTOS (additional photos on file):



^ Overview of home side bleacher foundation



^ Slab Prep at Visitors



^ Visitor's side retaining wall, slab form, and grading.



^ Sidewalk Prep at Visitor's side



^ Press box painting underway – scaffolding demob.



^ 1 detail needed to retain fill at new concrete



^2 detail needed to retain fill at new concrete



^ Turf Memorial Plaque – note decay at corners



^ Pile Cap and Footing – pre backfill



^ Door P104 to left – opens out – right hand hinge side



^ Press Box Framing



^ Door P104 to left – close up



^ PTAC opening at Press box



^ Rough-Ins at front of Press box



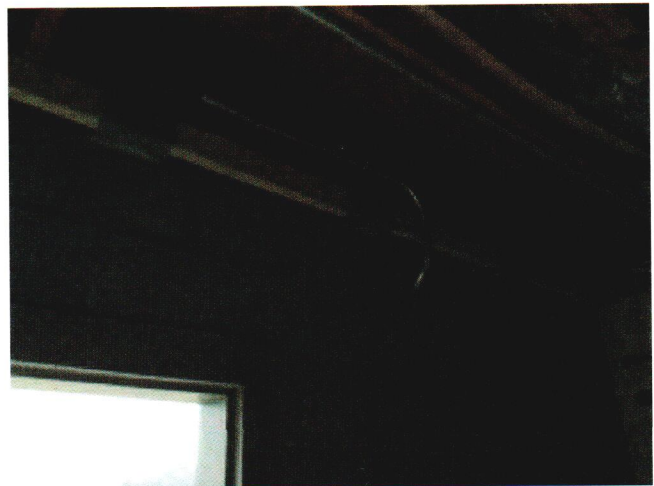
^ Press box right (E) side – PTAC ext.



^ Press box left (W) side



^ Press Box floor framing



^ Press Box Restroom top of CMU wall and floor framing



^ Slope Stabilization in place



^ Track base looking West – Home side